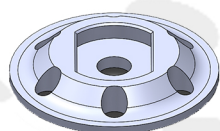
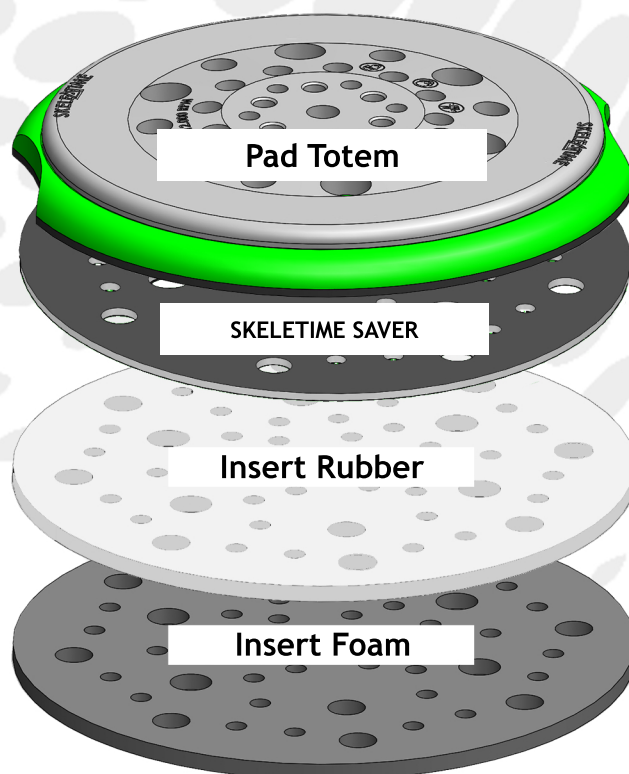
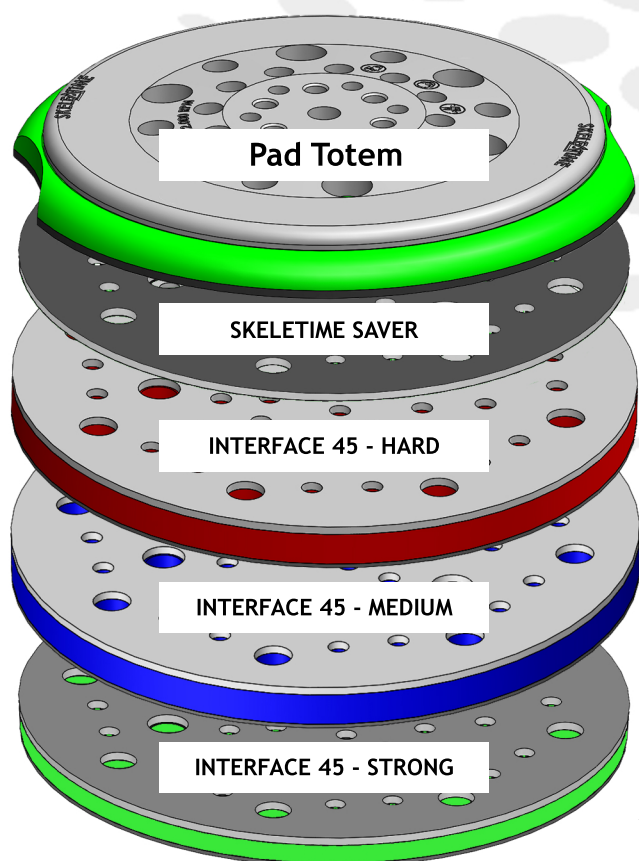
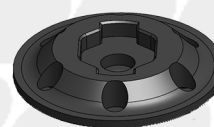


Totem backing pad and Skeletime® professional interface system

Skeletime D.148 Pad Totem (Cod. ABX.0148.19) sanding pad to be applied directly to both electric and pneumatic sanders. The Totem Pad has been designed mainly to offer optimal weight balancing for the use of the patented Skeletime interfaces (Interface) or with the its rubber insert (Insert Rubber) for plastics processing or conversion to common sanding pad.



Skeletime Adapter Pad Kit



*Si consiglia l'utilizzo di ABX.0148.014 Skeletime Saver per aumentare la durata nel tempo

Produced by SKEBA S.R.L. Website: www.skeba-srl.it E-mail: info@skeba-srl.it

SKELETIME®

Advantages:

1. It has the suction holes that match the Skeletime interfaces.
2. Excellent suction for dust-free working environments.
3. It has two lateral sockets for easy removal of the Interface, or Insert Rubber, and to preserve itself at breakage.
4. Keeps the abrasive unclogged.
5. Prevents sanding vibrations
6. Economic in the use for the sole replacement of the inserts.
7. Tear-off adhesive compatible with Interface velor for greater hold and durability.

Accessories:

- **Code ABX.0000.03 Skeletime Adapter Kit:** Universal adapters for sanders with non-standard attachments
- **Code ABX.0148.04 Insert rubber 5mm:** Rubber insert for plastic processing or conversion to common sanding pad.
- **Cod. ABX.0148.05 Interface Sponge 5mm:** Soft sponge insert to finish the smooth surface.
- **Cod. ABX.0148.14 Skeletime D.148 Saver 1mm:** Insert to increase the useful life of Skeletime products when worn.
- **Cod. ABX.0148.06 Skeletime D.148 Converter 1mm:** Insert to convert the hook and loop adhesive with a flat and smooth adhesive.

SKELEATIME®